

Ngai Hing
Engineering Plastic
毅興工程塑料



In order to keep in pace with the ever-changing market trend, the Group offers custom-made compounded plastics with engineering performance and properties under the registered brand-name of SPECTRON Since 1997.

The Group offers cost saving program, comprehensive technical support and total solution services to fulfil customers' requirements. The Group's custom-made engineering plastics include reinforced engineering resins, EMB engineering masterbatches, engineering elastomers, special modified plastics, plastics alloy for automotive industry, and PC/ABS alloy, etc. The products can meet UL, FDA, RoHS, EN71 etc. environmental standards upon customers' request.



NHEP

Ngai Hing Engineering Plastic
毅興工程塑料

**member
of**



NHH

Ngai Hing Hong Company Limited
毅興行集團成員



One of China's leading plastic material supplier and colour masterbatches manufacturer
中国最大塑料供应商和塑料着色公司之一

Early 1970s Establishment
1970年初 成立

April 1994 The first company in the industry listed on The Stock
1994年4月 Exchange of Hong Kong (HKEX:1047)
集团正式在香港联合交易所上市，成为首间香港塑料行业上市公司

2018 Offices and manufacturing plants* in China
Hong Kong*, Dongguan*, Guangzhou, Shanghai*, Tianjin, Qingdao*, Xiamen, Chengdu
全国各地拥有办事处及生产基地*
包括香港*, 东莞*, 广州, 上海*, 天津, 青岛*, 厦门, 成都

Turnover amounting to more than **HKD 1,700 millions** through a network of 23 affiliates

About NHEP

毅兴工程主要业务



Starts from 1997
1997成立

Custom-made Engineering Plastic
量身定做工程塑料

Sales
销售

Marketing
市场

R&D
研发

Manufacturing
生产

Registered trade-name 注册商标 **SPECTRON™**



Our Production 生產



Total Capacity of **60,000** MT/ Annum

每年达 **60,000** 吨生产量



● Shanghai
上海



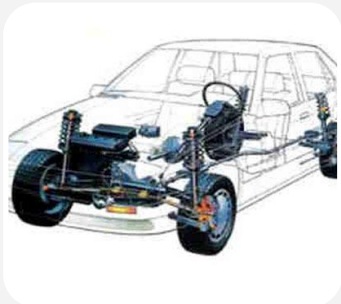
● Dongguan
东莞



● Hong Kong Head Office
香港总部

Product Series

产品系列



**Beautiful EP
Resins**
靓仔工程塑料



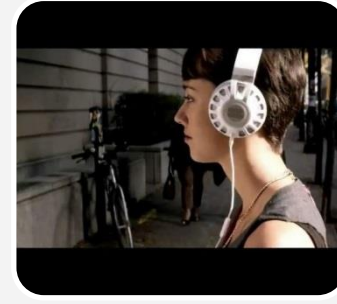
Green Line
绿色环保塑料



**New
Generation
TPE**
新一代TPE



Engineering PP
工程聚丙烯



**Innovative
EP Resin**
创新工程塑料



WE COMPOUND YOUR NEEDS INTO MARKET WANTS

No. 9 Dai Shun Street, Tai Po Industrial Estate, HONG KONG

www.nhh.com.hk

www.nhep-spectron.com

NHEP